

## TECHNICAL SPECIFICATION

### Bimetallic non-isolated cable terminals for crimping DTL



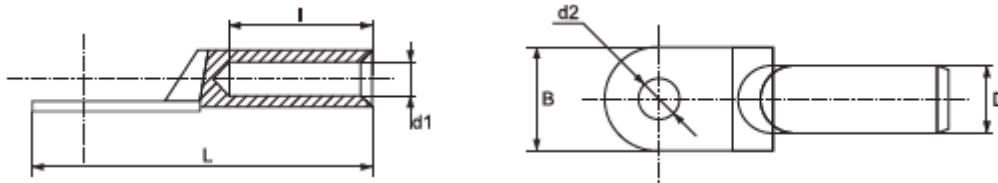
#### Description:

They are used for joining aluminum conductors - multicore conductors with different section to electrical devices or connections to combine all cores of the conductor, to provide safe connection at tightening in terminals and safe connection at the base of the terminal. Thus the connection stability against vibrations is increased and the possibility for short circuit is decreased. They are made of copper and aluminum alloys as in the aluminum billet is made under special technology the copper terminal formed like an ear. The connection is realized through crimping pliers, through mechanic pressing of the terminal and conductor. They are manufactured under modern technology and have high quality and long exploitation period.

#### Technical data:

- Material: copper aluminum
- Application: general for joining conductors to electrical devices

**Variants and dimensions:**



Terminal type	d1 (mm)	D (mm)	d2 (mm)	L (mm)	l	B	Packing / Box (pcs)	Catalogue number
DTL – 1 – 16	6	11	8	70	30	16	20 / 200 / 1440	59224
DTL – 1 – 25	7	12	8	75	34	18	20 / 180 / 1080	59225
DTL – 1 – 35	8.5	14	10	85	38	20.5	20 / 100 / 600	59226
DTL – 1 – 50	9.8	16	10	90	40	23	20 / 70 / 420	59227
DTL – 1 – 70	11.5	18	12	102	48	26	10 / 60 / 360	59228
DTL – 1 – 95	13.5	21	12	112	50	28	10 / 40 / 180	59229
DTL – 1 – 120	15	23	14	120	53	30	10 / 30 / 120	59230
DTL – 1 – 150	16.5	25	14	126	56	34	5 / 25 / 120	59231
DTL – 1 – 185	18.5	27	16	133	58	37	5 / 20 / 120	59232
DTL – 1 – 240	21	30	16	140	60	40	4 / 12 / 72	59233

**Standards:**

EN 61 238-1

